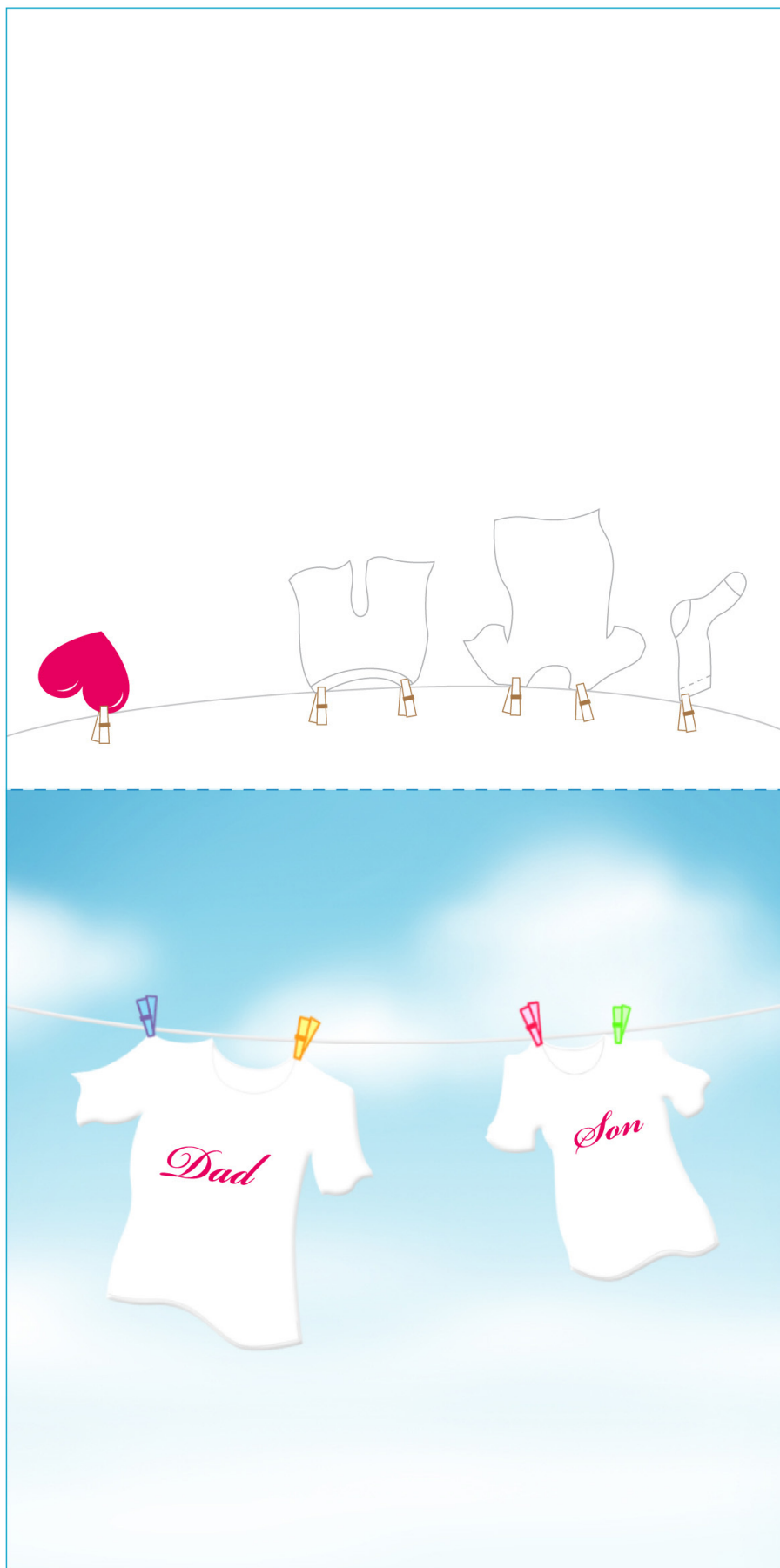


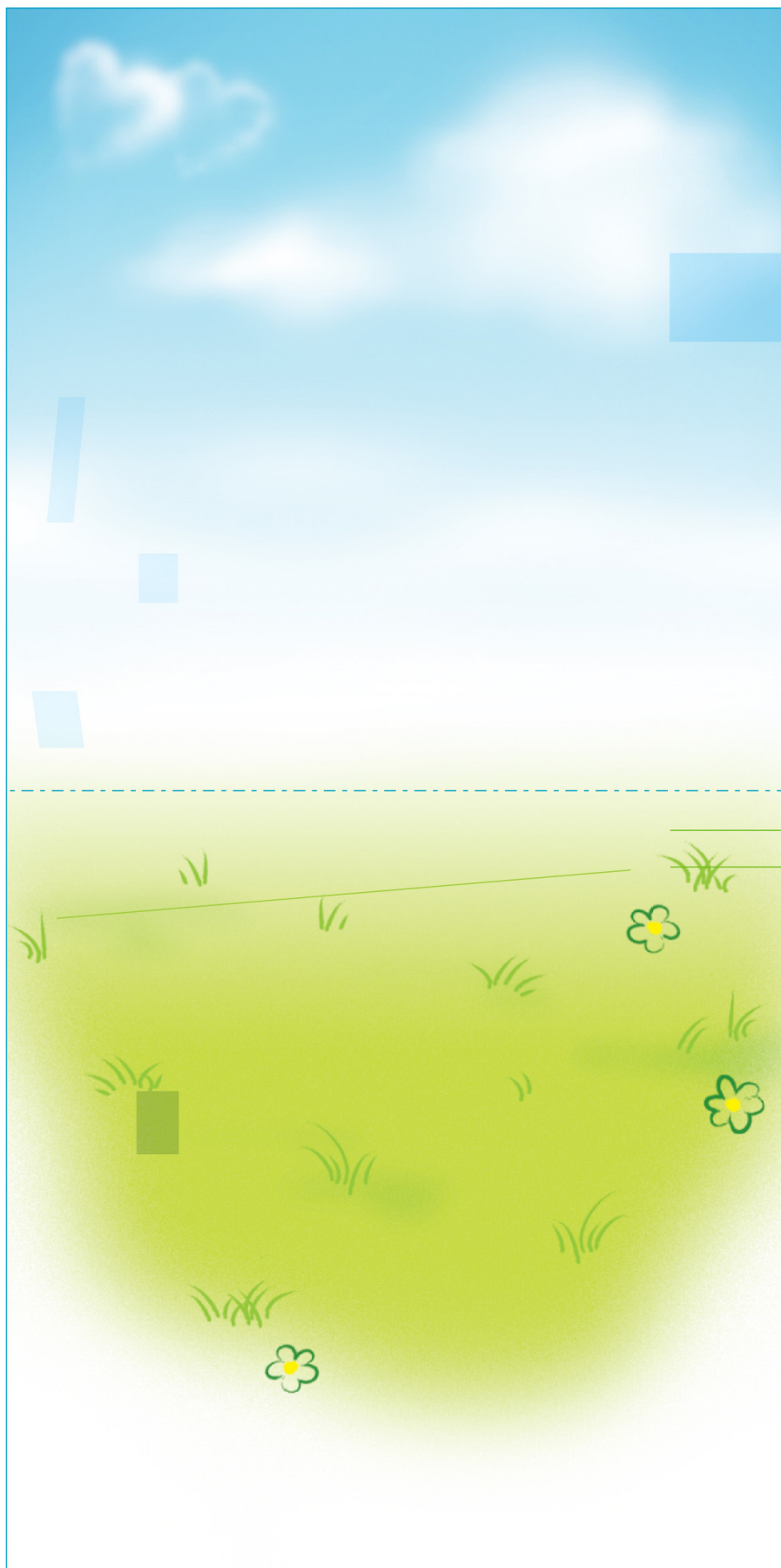


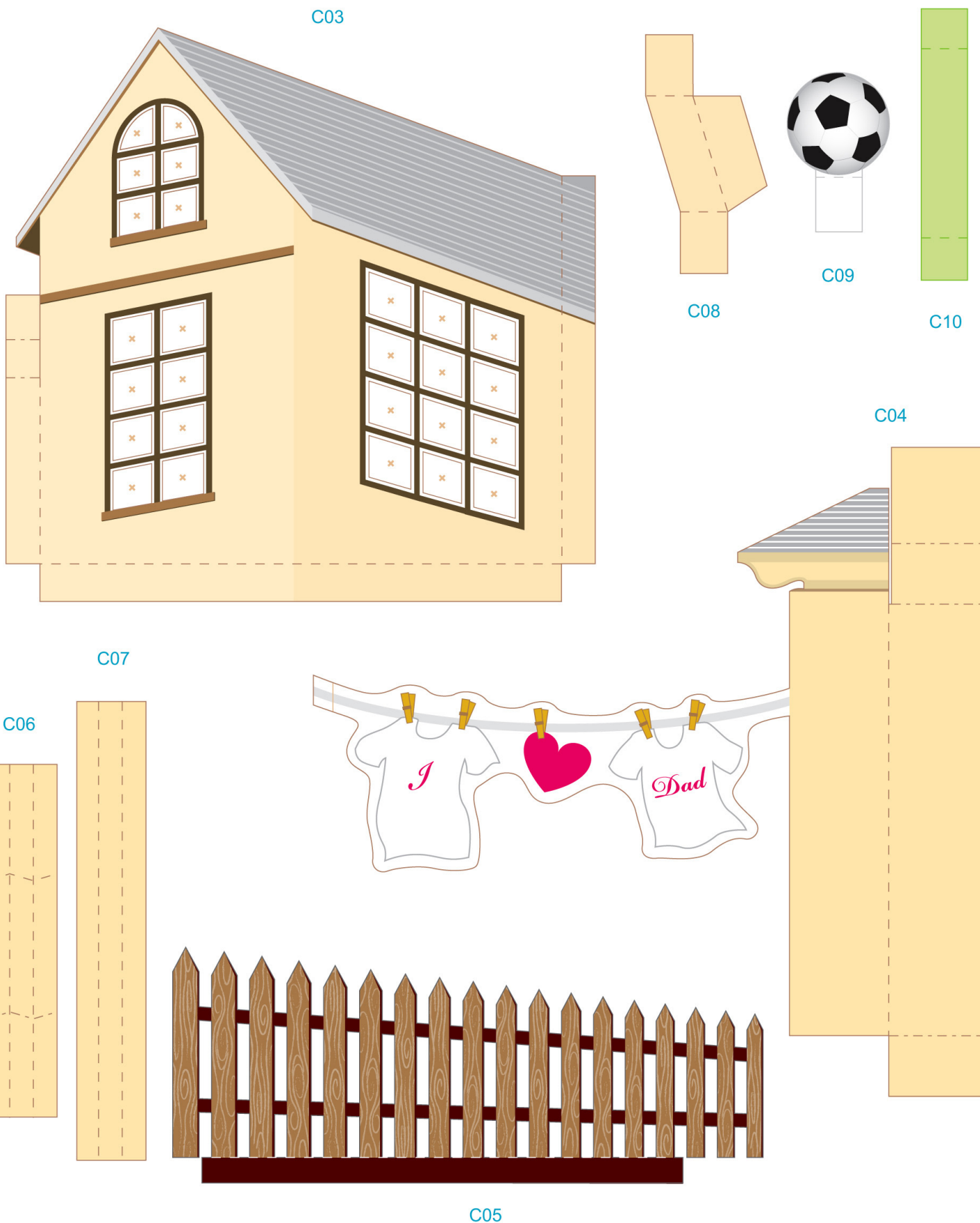
C01





C02

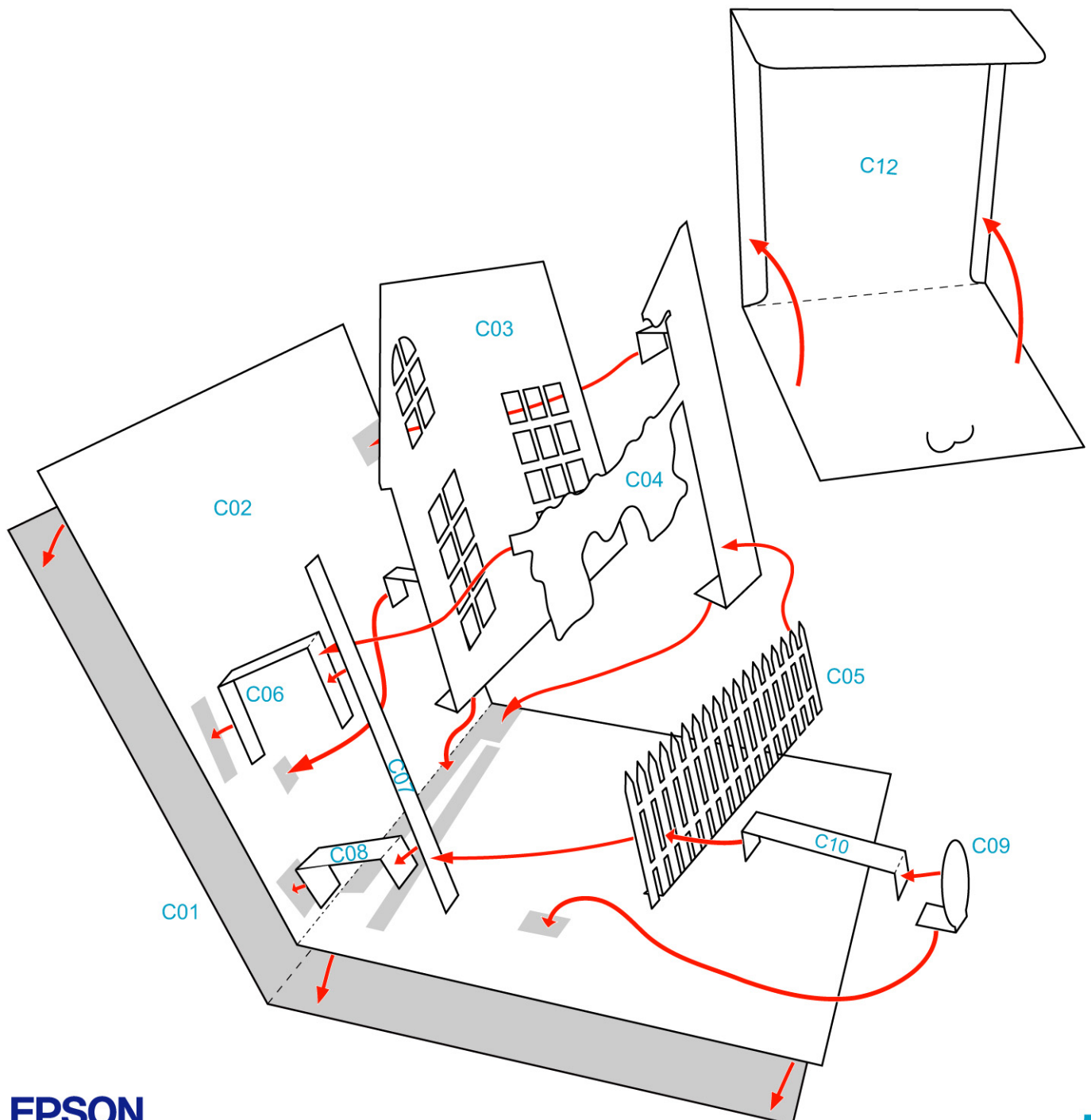
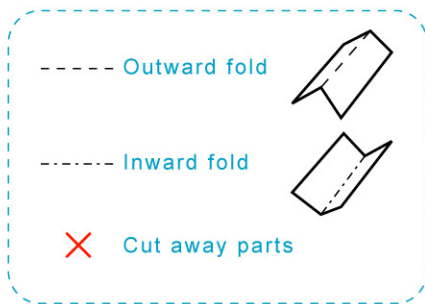




C12



Assembly Instructions



Instructions

1



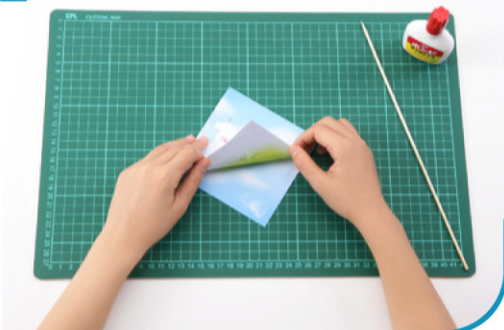
Use a pen whose ink has dried out, or a tracer, to trace lines first.

2



Separate all parts along the lines. Mark their identity on the back to avoid confusion.

3



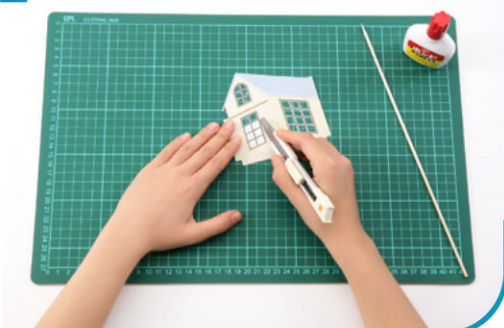
Fold and glue C01 & C02 to form a card.

4



Make cuts along the blue line on C12, then fold and glue to form an envelope.

5



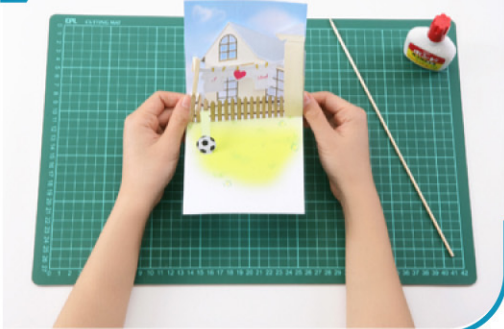
Cut out parts of C03 which are marked with an 'x'.

6



Fold and glue C04, C06, C07 and C08 respectively.

7



Glue C03 - C11 according to the assembly instruction and now you have this beautiful Father's Day Card!