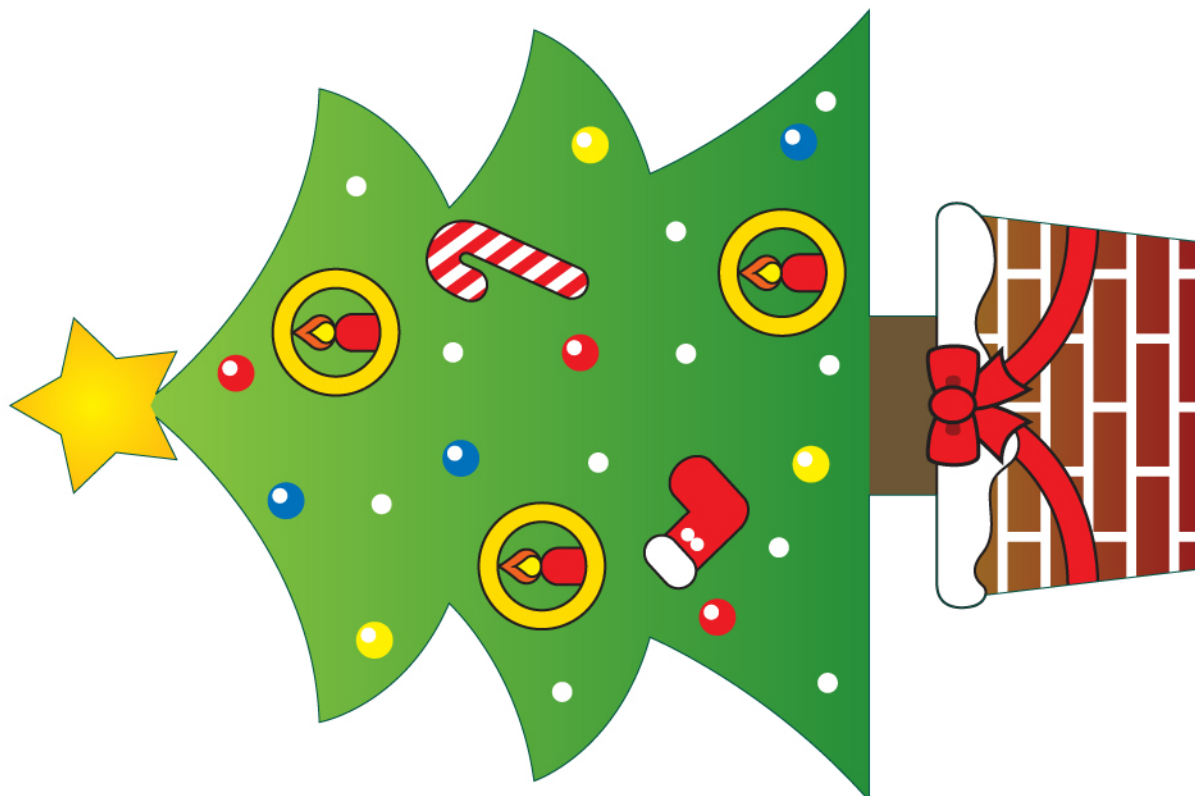
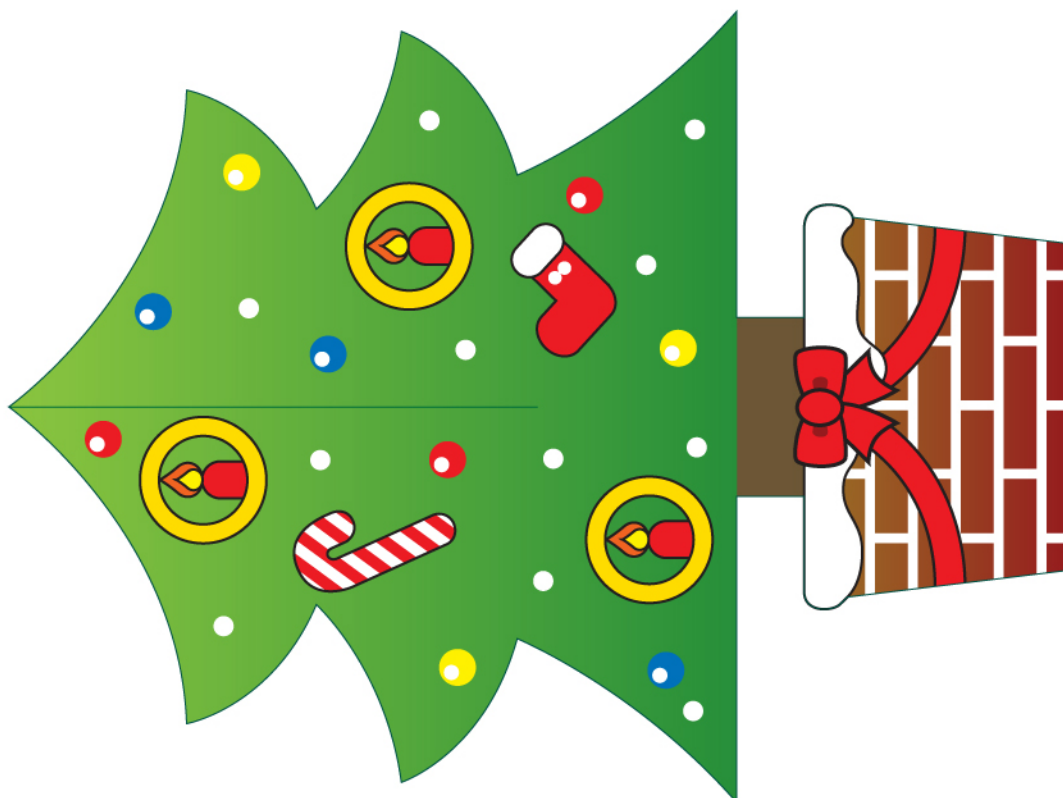


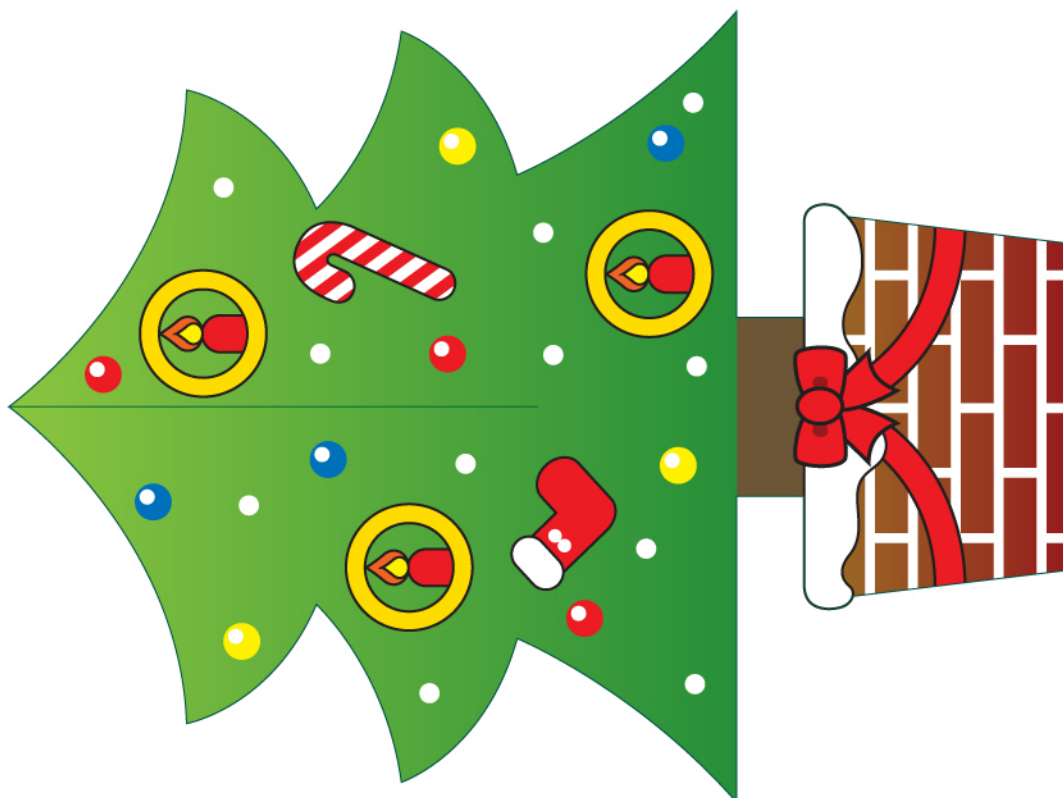
C01



C02



C03



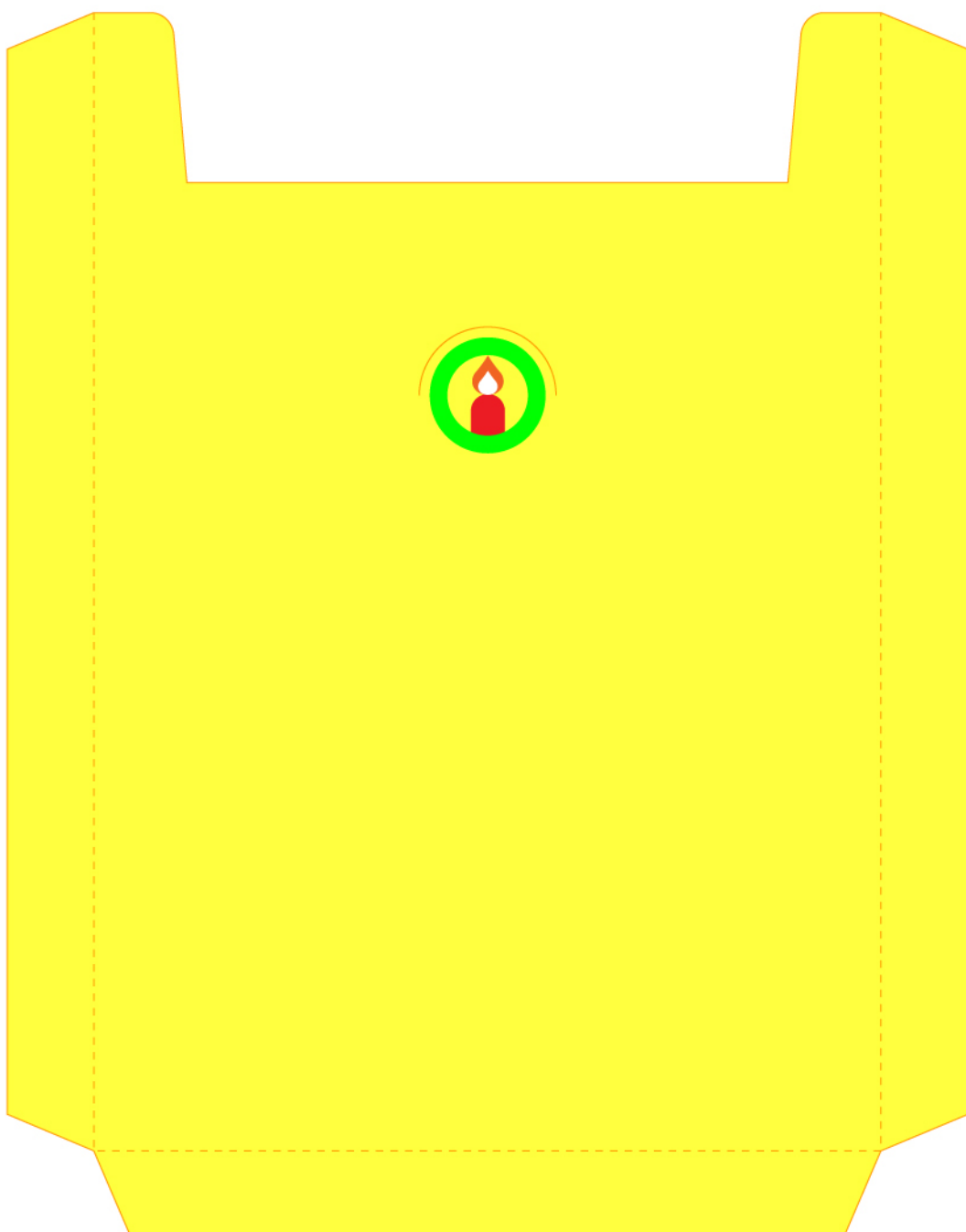
C04



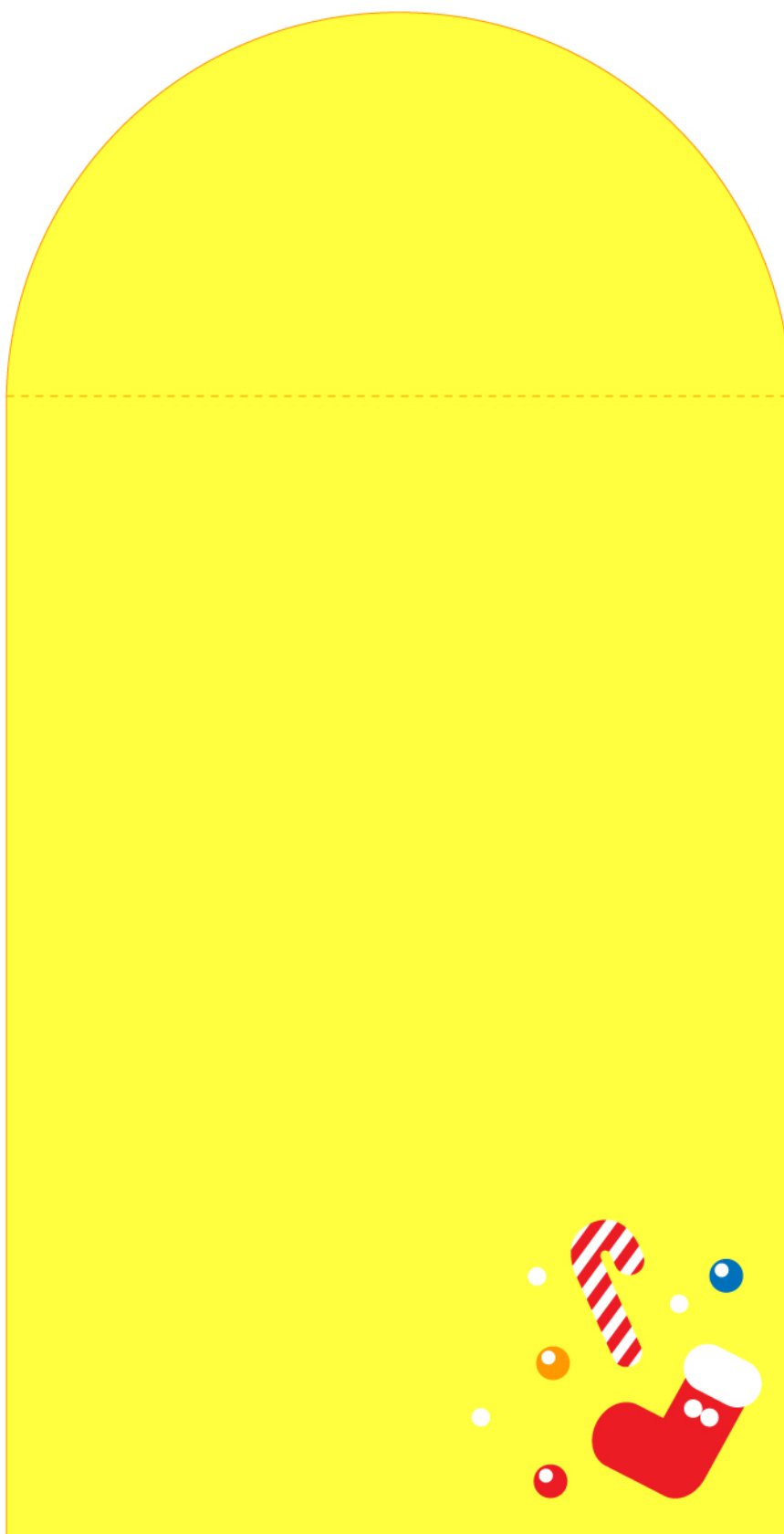
C05



C06

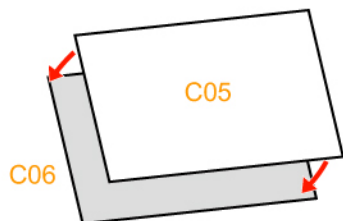
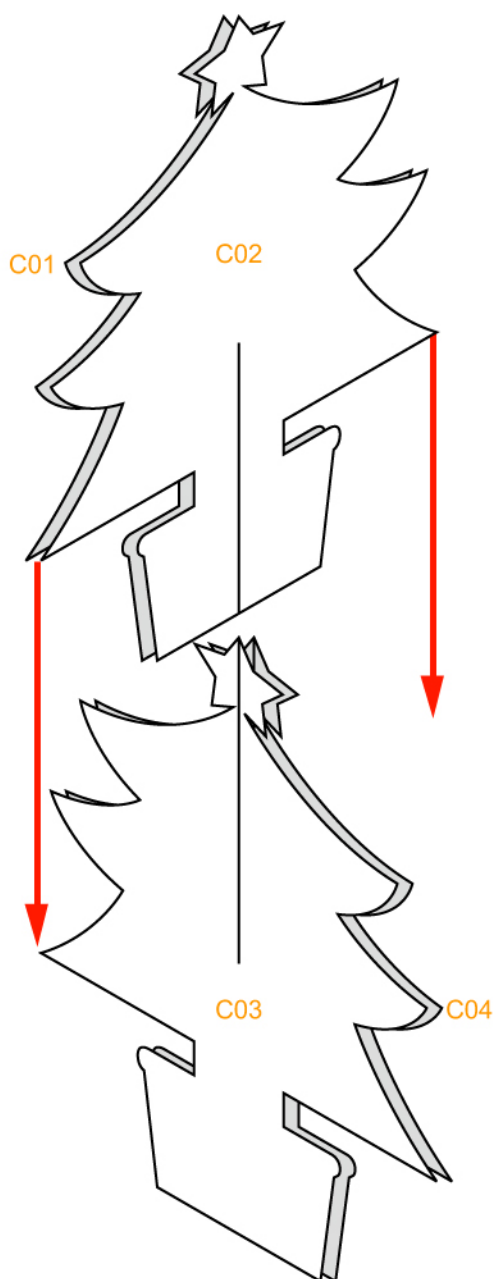
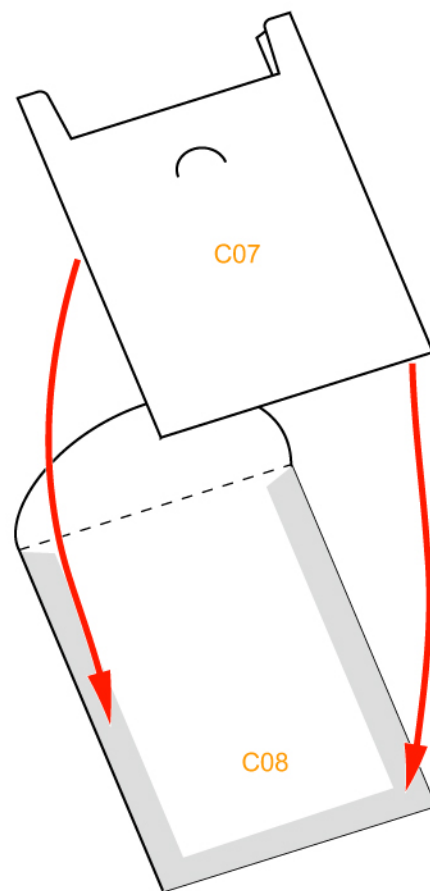
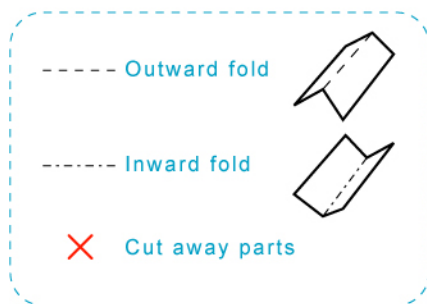


C07



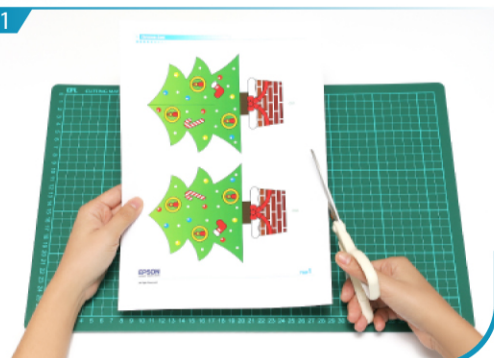
C08

Assembly Instructions



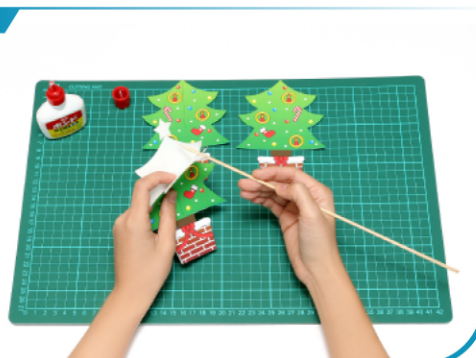
Instructions

1



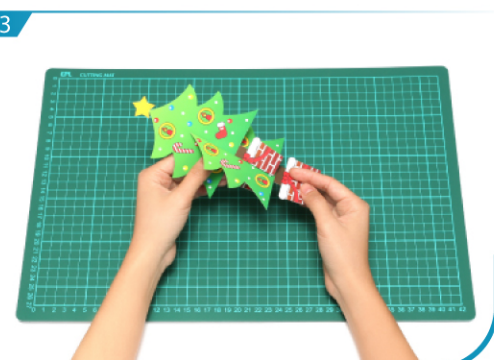
Separate all parts along the lines. Mark their identity on the back to avoid confusion.

2



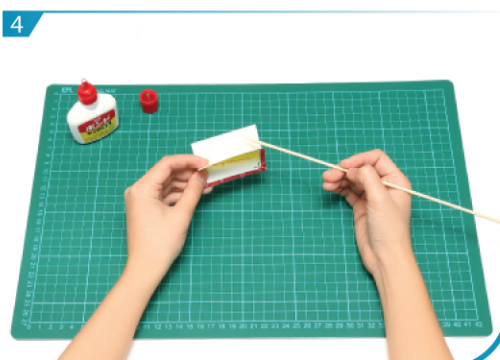
Fold and glue C01 and C02. Repeat the step with C03 and C04.

3



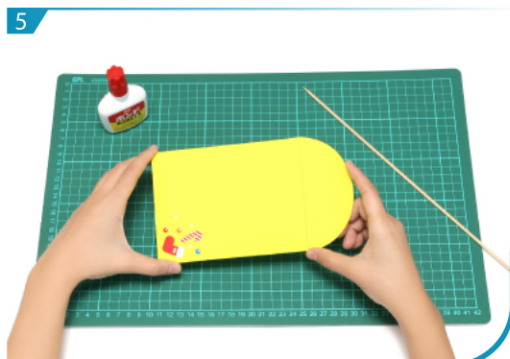
Cut along the green lines on C01 and C03. Assemble C01 and C03 according to the assembly instructions.

4



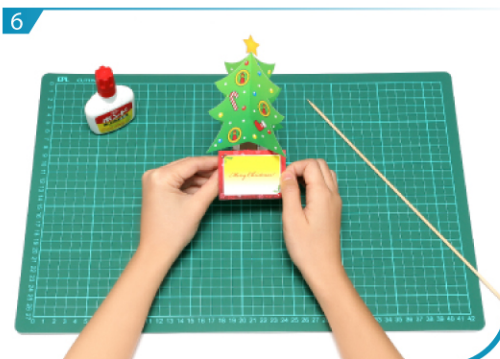
Glue C05 and C06.

5



Fold and glue C07 and C08 to form an envelope.

6



The Christmas Card is now done!