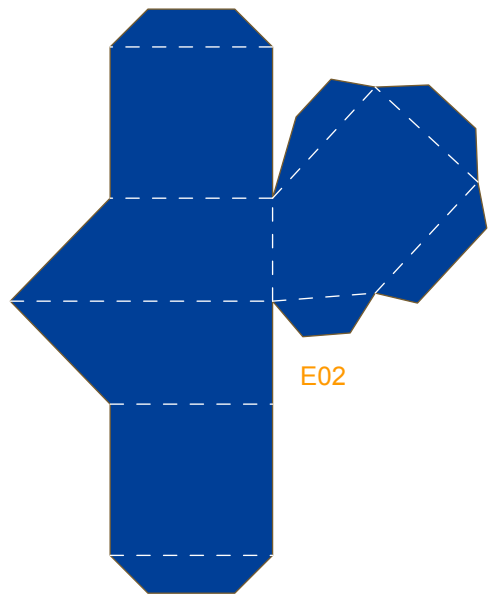


E01



E03



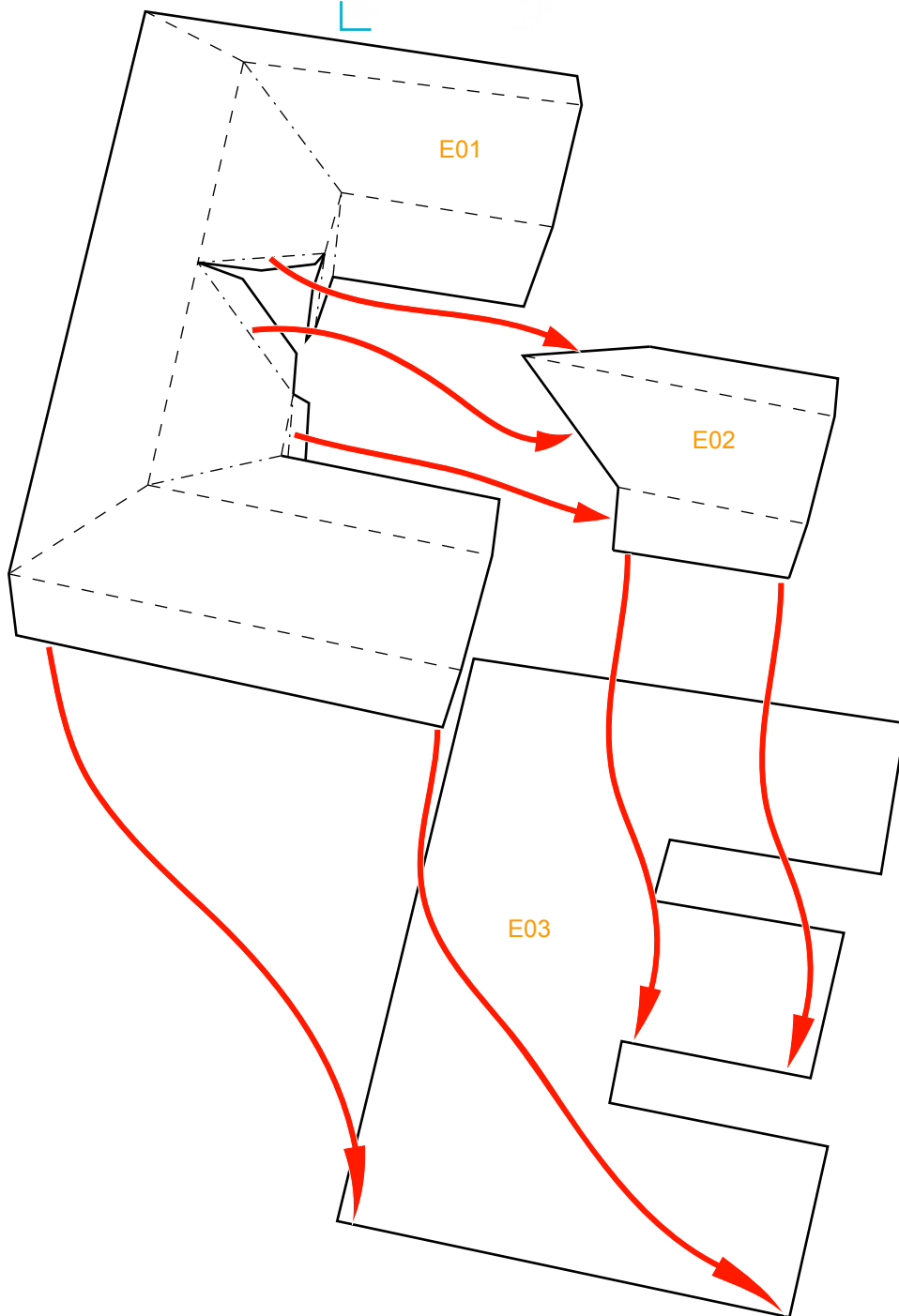

E02

Assembly Instructions

--- Outward fold

--- Inward fold

✗ Cut away parts



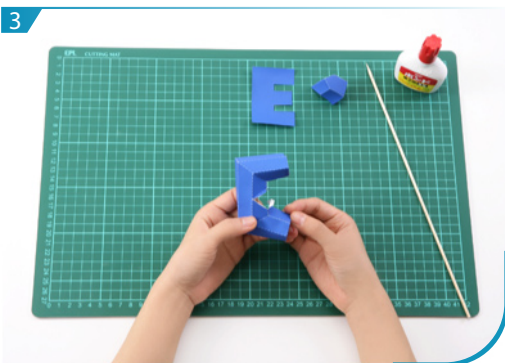
Instructions



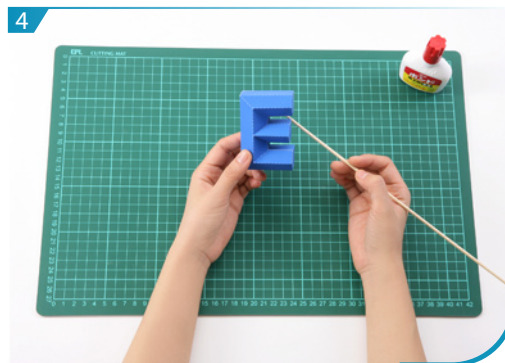
1 Use a pen whose ink has dried out, or a tracer, to trace lines first.



2 Separate all parts along the lines. Mark their identity on the back to avoid confusion.



3 Fold and glue E01 and E02 respectively.



4 Glue E01, E02 and E03 according to the assembly instruction, Letter "E" is now done.