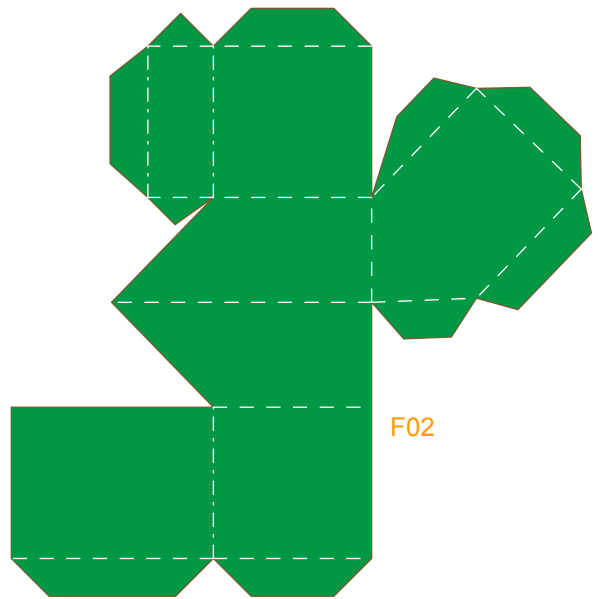


F01



F02



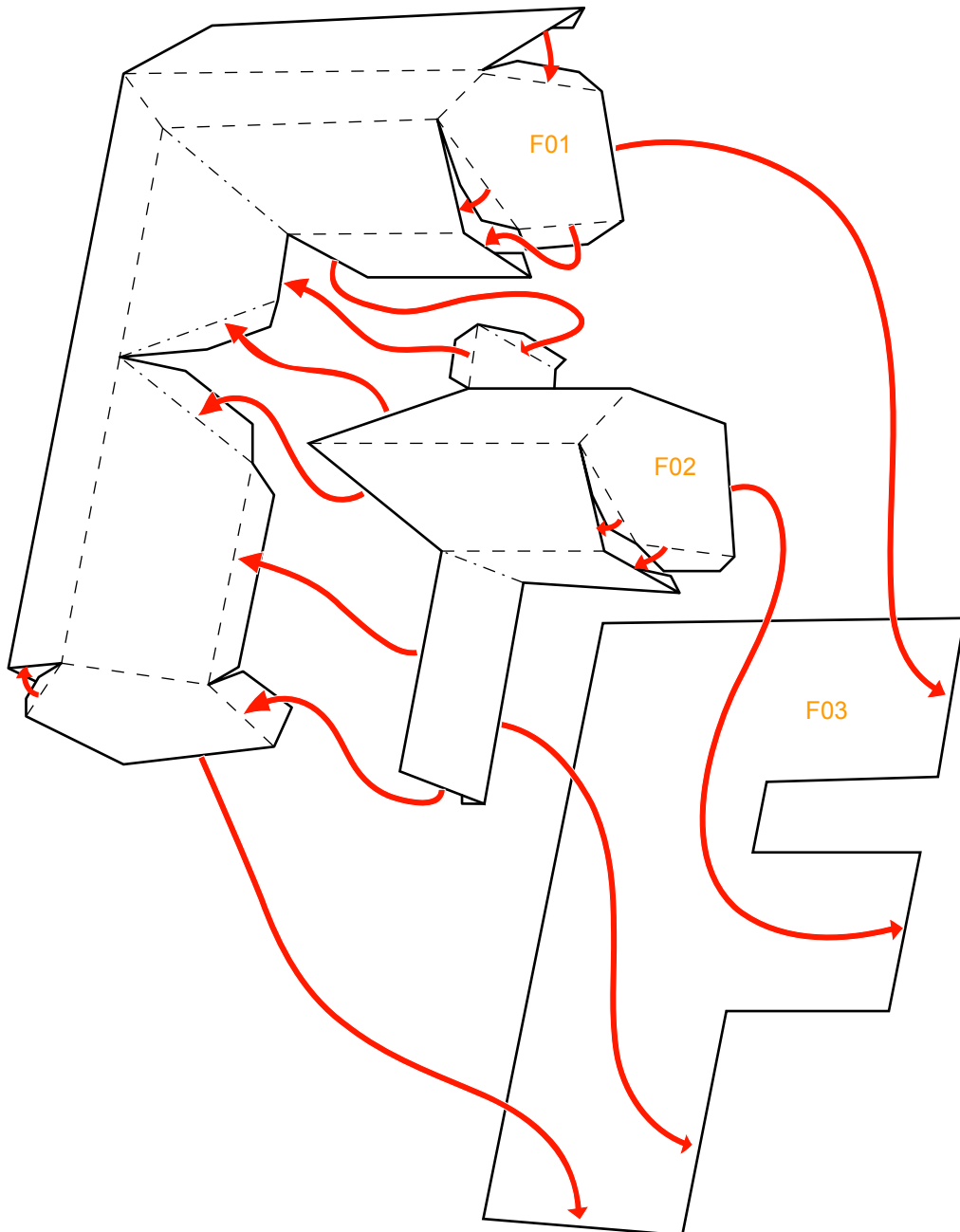
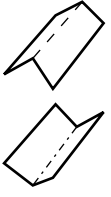
F03

Assembly Instructions

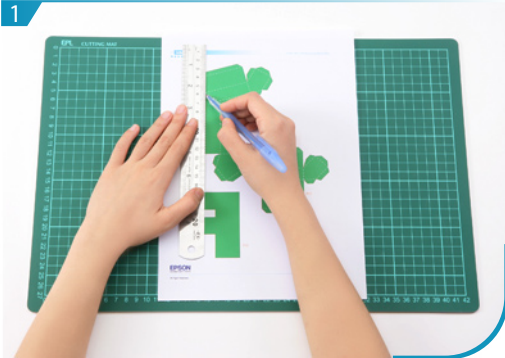
--- Outward fold

--- Inward fold

✗ Cut away parts



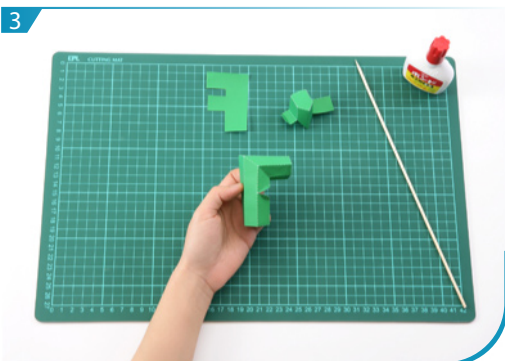
Instructions



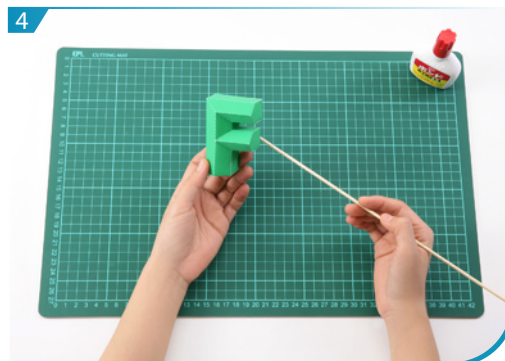
1 Use a pen whose ink has dried out, or a tracer, to trace lines first.



2 Separate all parts along the lines. Mark their identity on the back to avoid confusion.



3 Fold and glue F01 and F02 respectively.



4 Glue F01, F02 and F03 according to the assembly instruction, Letter "F" is now done.