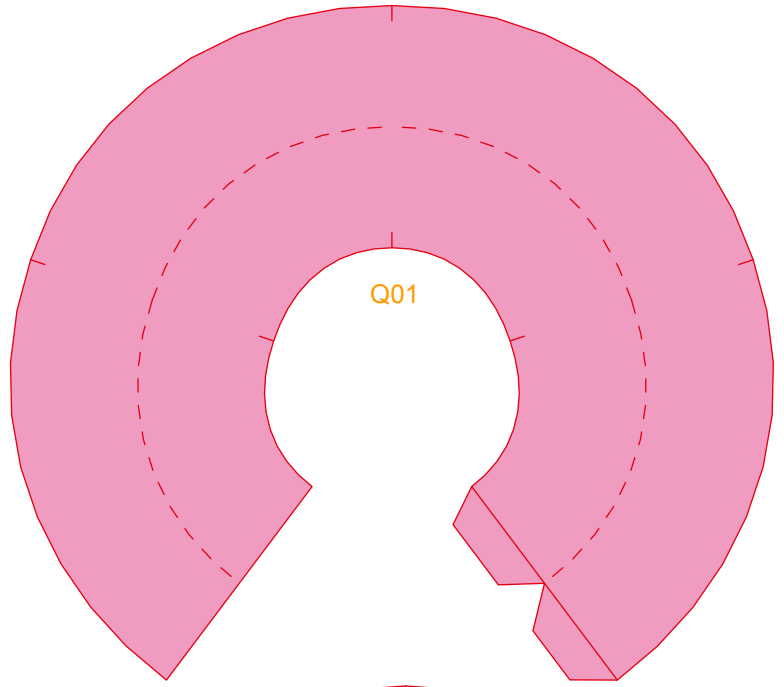
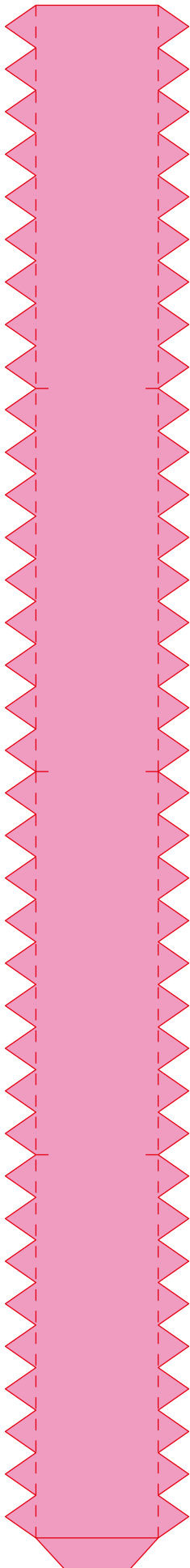
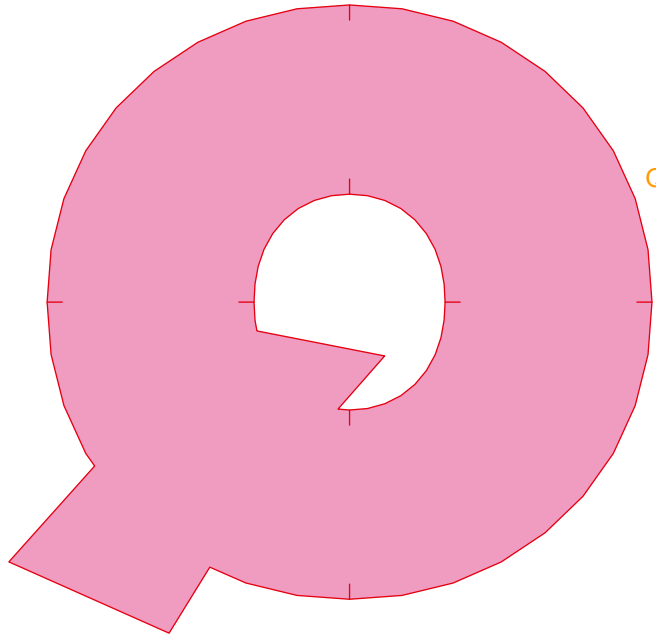


Q03

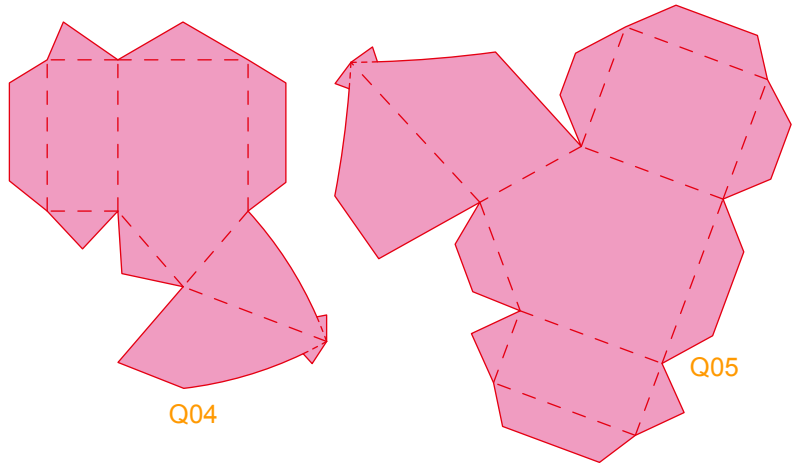
Q02



Q01



Q06



Q04

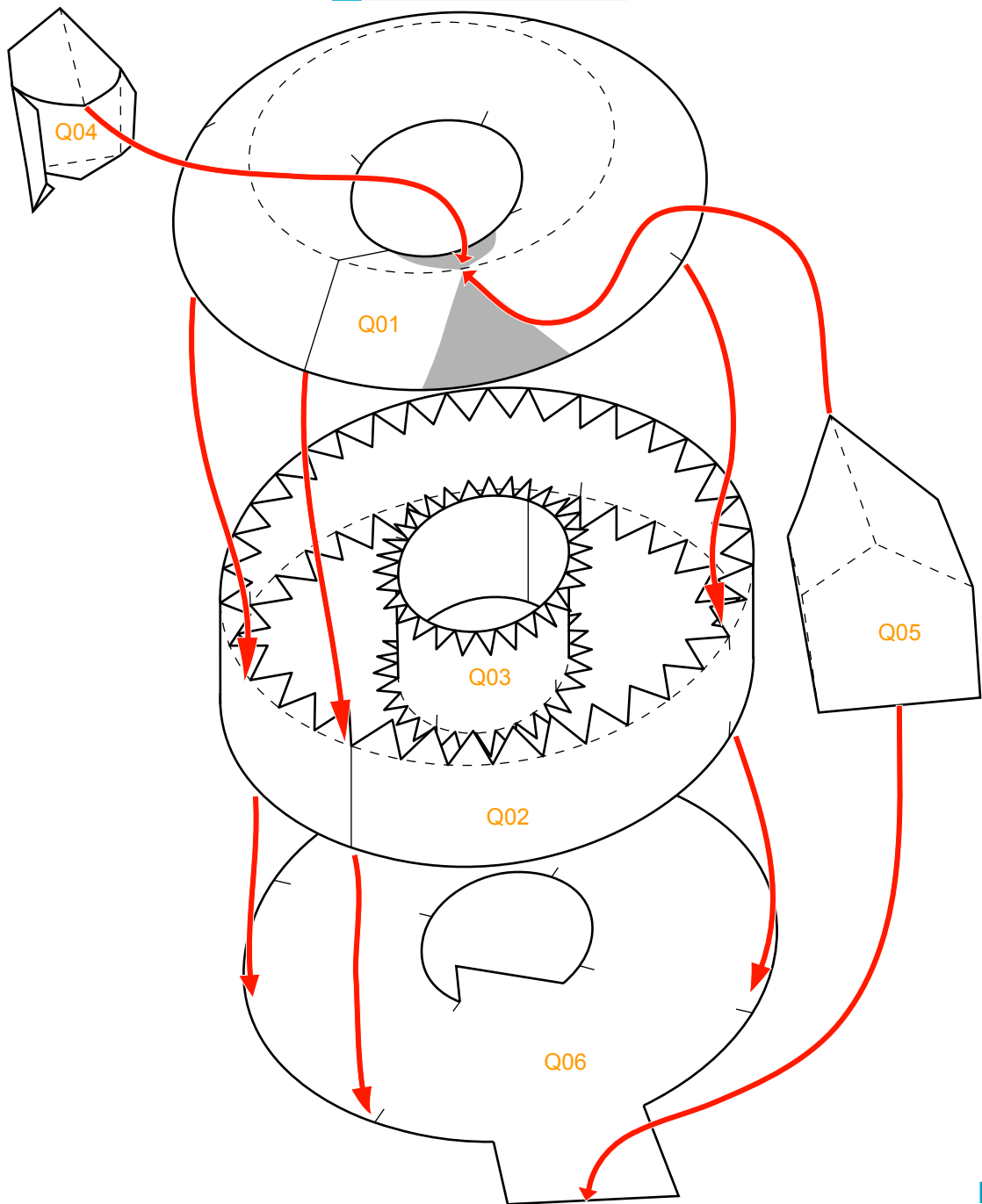
Q05

### Assembly Instructions

--- Outward fold

--- Inward fold

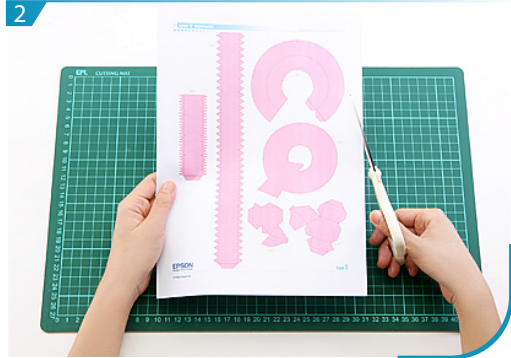
✗ Cut away parts



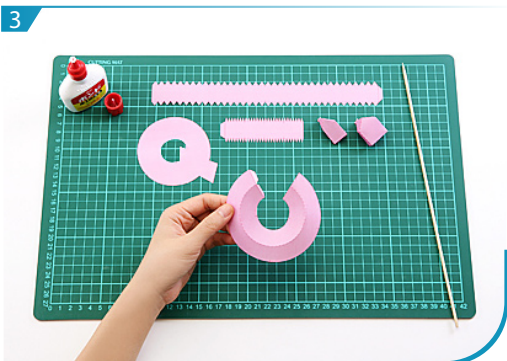
Instructions



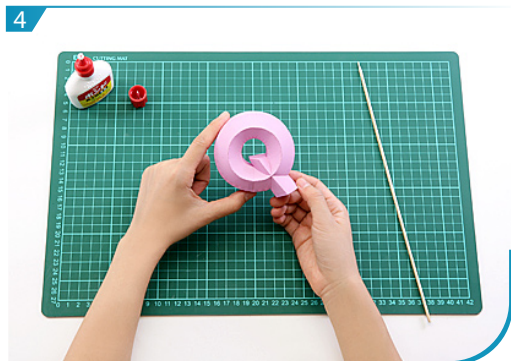
1 Use a pen whose ink has dried out, or a tracer, to trace lines first.



2 Separate all parts along the lines. Mark their identity on the back to avoid confusion.



3 Fold and glue Q01, Q04 and Q05 respectively.



4 Glue Q01 to Q06 according to the assembly instruction, Letter "Q" is now done.